



Set the bar high.

The vehicle that defined a category continues to redefine what an SUV can be. The Honda CR-V delivers a wealth of standard features and conveniences, all backed by the available Honda Sensing® suite of safety and driver-assistive technologies.

See what people love about their CR-V at [facebook.com/hondacrvc](https://www.facebook.com/hondacrvc)

CR-V AWD Touring shown in Molten Lava Pearl.





Travel in style.

Elevate your comfort and style. From front seats designed for greater comfort to more rear legroom than many larger SUVs, the CR-V keeps you and your passengers comfortable from point A to point B.

See more Honda vehicles in action at [youtube.com/honda](https://www.youtube.com/honda)

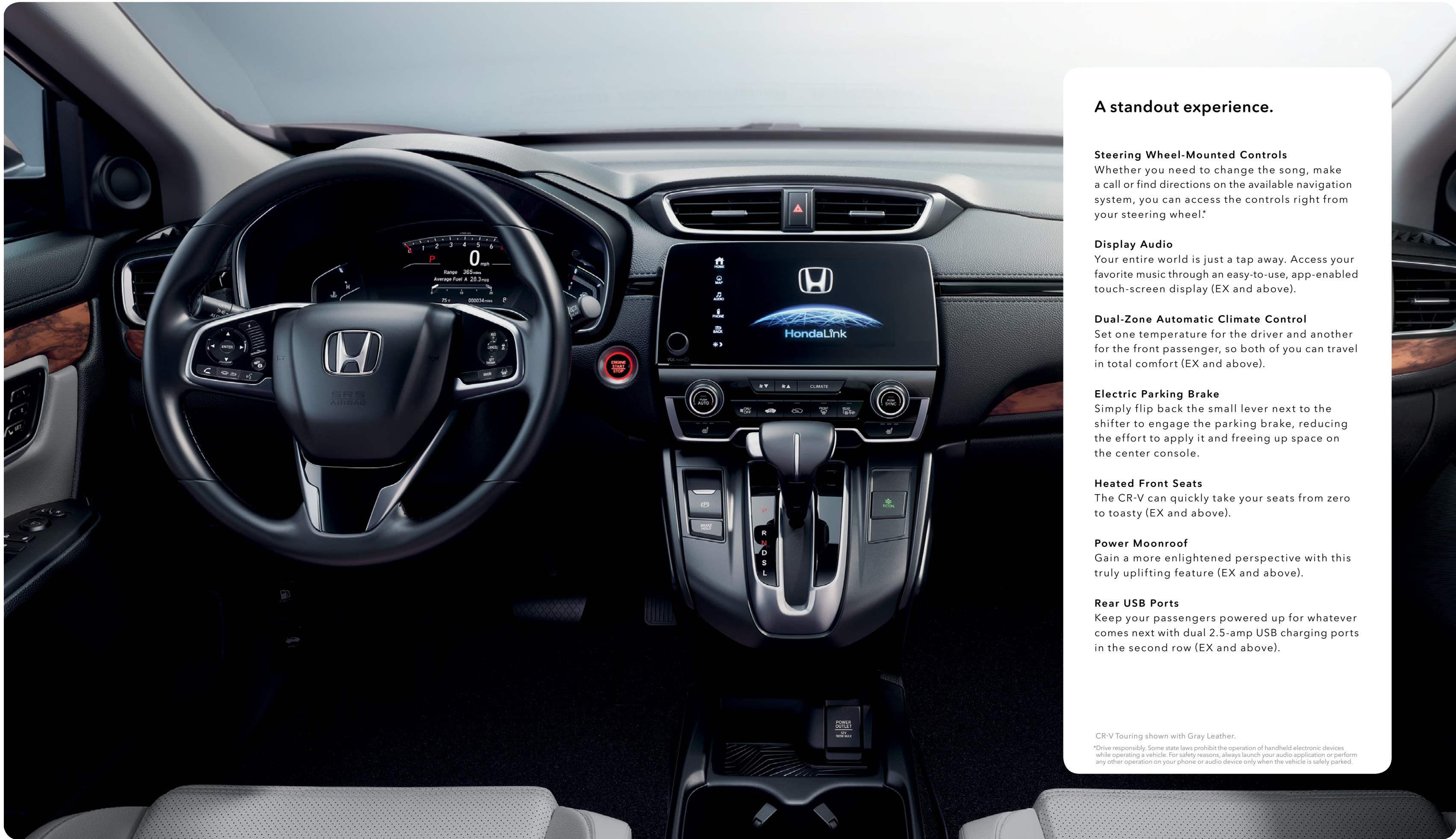
CR-V Touring shown in Lunar Silver Metallic.



Excellence in every detail.

The CR-V is committed to comfort and convenience. Inside, you'll find an available leather-trimmed interior, spacious seating for five and technology to make life on the road more enjoyable.

CR-V Touring shown with Gray Leather.



A standout experience.

Steering Wheel-Mounted Controls

Whether you need to change the song, make a call or find directions on the available navigation system, you can access the controls right from your steering wheel.*

Display Audio

Your entire world is just a tap away. Access your favorite music through an easy-to-use, app-enabled touch-screen display (EX and above).

Dual-Zone Automatic Climate Control

Set one temperature for the driver and another for the front passenger, so both of you can travel in total comfort (EX and above).

Electric Parking Brake

Simply flip back the small lever next to the shifter to engage the parking brake, reducing the effort to apply it and freeing up space on the center console.

Heated Front Seats

The CR-V can quickly take your seats from zero to toasty (EX and above).

Power Moonroof

Gain a more enlightened perspective with this truly uplifting feature (EX and above).

Rear USB Ports

Keep your passengers powered up for whatever comes next with dual 2.5-amp USB charging ports in the second row (EX and above).

CR-V Touring shown with Gray Leather.

*Drive responsibly. Some state laws prohibit the operation of handheld electronic devices while operating a vehicle. For safety reasons, always launch your audio application or perform any other operation on your phone or audio device only when the vehicle is safely parked.

One CR-V for life's many roads.

A vehicle designed for a superior driving experience makes for better exploration of the roads ahead. With responsive handling and a 190-hp¹ turbocharged engine (EX and above) as well as an impressive 34-mpg highway rating,* the CR-V ignites your sense of adventure.

CR-V AWD Touring shown in Dark Olive Metallic with accessory crossbars and roof box.
Honda reminds you to properly secure cargo items.*28 city/34 highway/30 combined mpg rating for 2WD models. 27 city/33 highway/29 combined mpg rating for AWD models. Based on 2018 EPA mileage ratings. Use for comparison purposes only. Your mileage will vary depending on how you drive and maintain your vehicle, driving conditions and other factors.





More room for what matters.

Generous cargo space becomes even roomier with a fold-flat second row and extended luggage compartment. Whether you're running errands or roaming across the country, the CR-V has room to spare.*

Plenty of Space

The CR-V seats five comfortably while offering 39.2 cu ft of cargo volume² – more than enough for day-to-day needs.

Hands-Free Access Power Tailgate

Your tailgate opens to your exact specifications (EX-L, Touring). And as a Honda first, hands-free access means you can open the tailgate with the kick of a leg (Touring).

Easy Fold-Down 60/40 Split Rear Seatback

The rear seat folds down in one motion, and expands the cargo volume to 75.8 cu ft.²

Walk Away Auto Lock[®]

With the engine turned off and the key in your pocket, this feature automatically locks the vehicle as you walk away (EX and above).

Get the latest Honda news by following [@Honda](#) on [Twitter](#).

CR-V Touring shown in Lunar Silver Metallic and Modern Steel Metallic.
*Honda reminds you to properly secure cargo items.



Commute with confidence.

The CR-V has achieved top ratings from NHTSA and IIHS* and is equipped with available safety and driver-assistive technologies including Honda Sensing, a suite of features that can assist and help you sense things you might miss while driving.

CR-V EX (left) shown in Crystal Black Pearl.
CR-V AWD Touring (right) shown in Lunar Silver Metallic.

*Government 5-Star Safety Ratings are part of the National Highway Traffic Safety Administration's (NHTSA's) New Car Assessment Program (www.safercar.gov).

Blind Spot Information System (BSI)³

BSI uses radar sensors to detect the presence of vehicles to the side and behind the CR-V, to assist you during lane changes. Warning indicators alert you if the system detects a vehicle.

Cross Traffic Monitor³

Sensors at the rear corners of the CR-V can detect vehicles approaching from either side when backing up. The driver is alerted by an audible chime and arrows in the rearview camera display when a vehicle is detected.

Road Departure Mitigation System (RDM)⁴

RDM can determine if you cross over detected lanes without signaling, can provide steering assistance to help you return to your lane or provide braking to help keep from leaving the roadway entirely.

Collision Mitigation Braking System™ (CMBS™)⁵

CMBS can help bring your CR-V to a stop by automatically applying brake pressure when the system determines that a frontal collision is unavoidable.

Adaptive Cruise Control (ACC)⁶ with Low-Speed Follow

ACC helps you maintain a set following interval behind detected vehicles for highway driving. If the detected vehicle slows to a stop, ACC is designed to slow and stop your vehicle as well. After stopping, a tap on the throttle instructs the car to continue maintaining the desired interval.

Lane Keeping Assist System (LKAS)⁷

With your hands on the steering wheel, long highway drives are easier with LKAS, which subtly adjusts steering to help keep the CR-V centered in a detected lane.



5-Star Overall Vehicle Score¹



*Trims with front crash prevention features and specific headlights.



CR-V AWD Touring shown in Molten Lava Pearl.

Personal touches.

Manufactured to the same strict standards as Honda vehicles, Honda Genuine Accessories are the perfect way to personalize and protect your vehicle. Please see your Honda dealer for details and a complete list of accessories.

See more of the CR-V and other Honda vehicles by following [@Honda](#) on [Instagram](#), and remember to share your [#HondaLove](#).

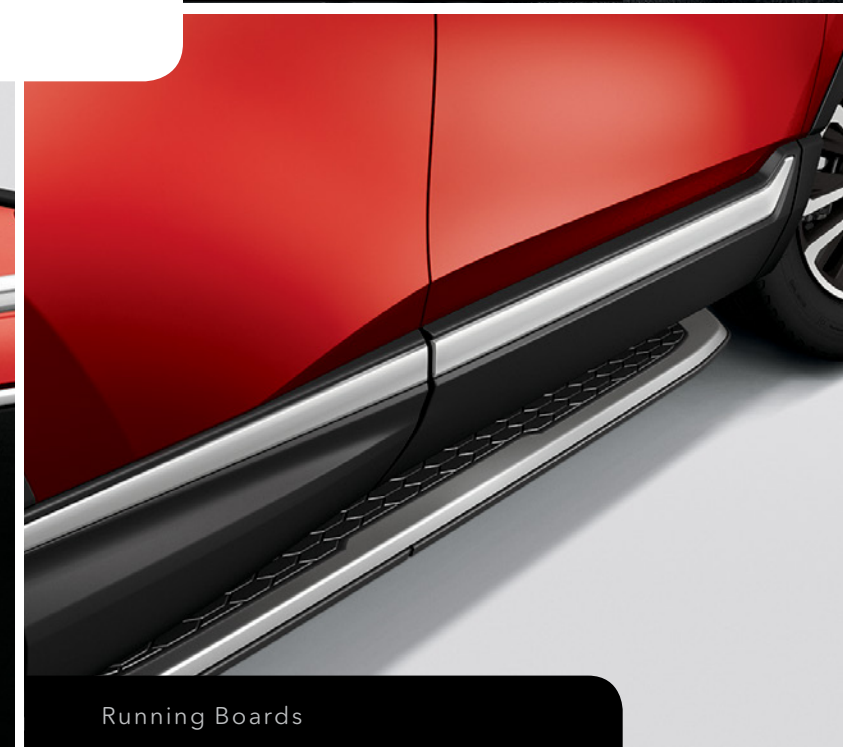
CR-V Touring shown in Molten Lava Pearl with Honda Genuine Accessories.



All-Season Floor Mats



Crossbars and Roof Rails



Running Boards

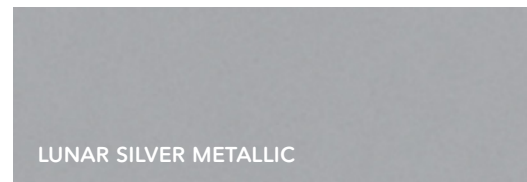


Front Sport Bumper

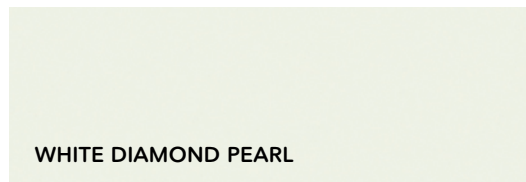
Featured Honda CR-V Genuine Accessories

- 19-Inch Diamond-Cut Alloy Wheels
- Roof Rails
- Roof Box
- Front Fender Emblems
- Running Boards
- Front and Rear Sport Bumpers
- Sport Exhaust Finisher
- Trailer Hitch, Ball and Harness
- Body-Colored Parking Sensors
- Tent
- Heated Steering Wheel
- All-Season Floor Mats
- Illuminated Door Sills
- Interior Illumination
- Crossbars

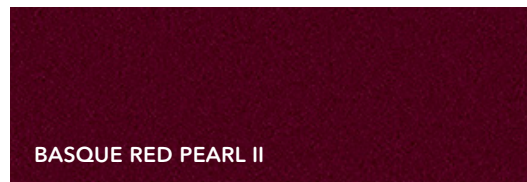
Exterior



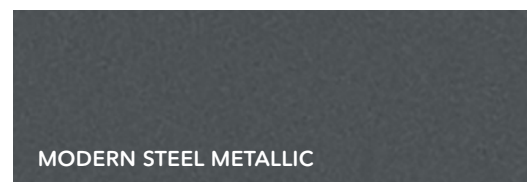
LUNAR SILVER METALLIC



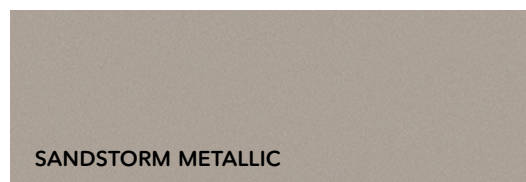
WHITE DIAMOND PEARL



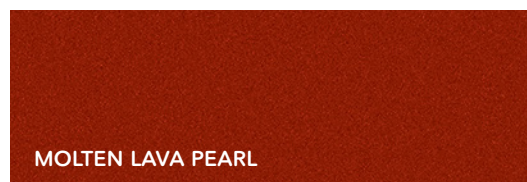
BASQUE RED PEARL II



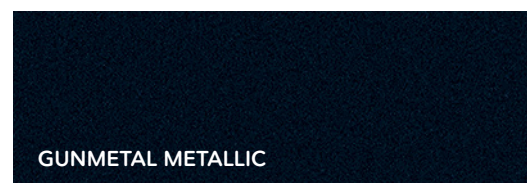
MODERN STEEL METALLIC



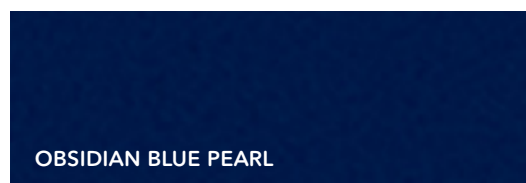
SANDSTORM METALLIC



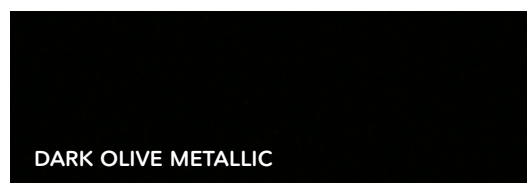
MOLTEN LAVA PEARL



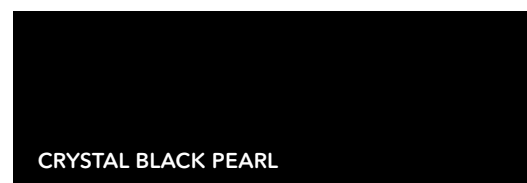
GUNMETAL METALLIC



OBSIDIAN BLUE PEARL



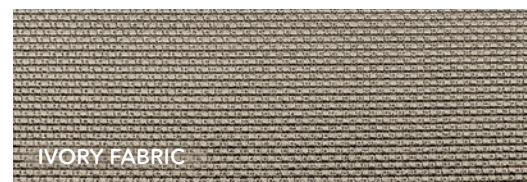
DARK OLIVE METALLIC



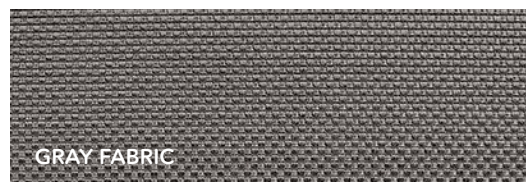
CRYSTAL BLACK PEARL

Interior

LX / EX



IVORY FABRIC



GRAY FABRIC



BLACK FABRIC

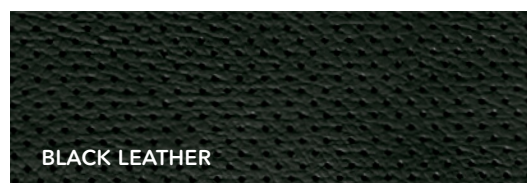
EX-L / TOURING



IVORY LEATHER



GRAY LEATHER



BLACK LEATHER

¹190 hp @ 5600 rpm (SAE net). ²Carrying too much cargo or improperly storing it can affect the handling, stability and operation of this vehicle. Follow applicable load limits and loading guidelines. ³The systems are not a substitute for your own visual assessment before changing lanes or backing up, and may not detect all objects, or provide complete information about conditions, behind or to the side of the vehicle. System accuracy will vary based on weather, size of object, and speed. Driver remains responsible for safely operating vehicle and avoiding collisions. ⁴Road Departure Mitigation only alerts drivers when lane drift is detected without a turn signal in use and can apply mild steering torque to assist driver in maintaining proper lane position and/or brake pressure to slow the vehicle's departure from a detected lane. RDM may not detect all lane markings or lane departures; accuracy will vary based on weather, speed and road condition. System operation affected by extreme interior heat. Driver remains responsible for safely operating vehicle and avoiding collisions. ⁵CMBS cannot detect all objects ahead and may not detect a given object; accuracy will vary based on weather, speed and other factors. System operation affected by extreme interior heat. System designed to mitigate crash forces. Driver remains responsible for safely operating vehicle and avoiding collisions. ⁶ACC with Low-Speed Follow cannot detect all objects ahead and may not detect a given object; accuracy will vary based on weather, speed, and other factors. ACC should not be used in heavy traffic, poor weather, or on winding roads. Driver remains responsible for safely operating vehicle and avoiding collisions. ⁷LKAS only assists driver in maintaining proper lane position when lane markings are identified without a turn signal in use and can only apply mild steering torque to assist. LKAS may not detect all lane markings; accuracy will vary based on weather, speed and road condition. System operation affected by extreme interior heat. Driver remains responsible for safely operating vehicle and avoiding collisions. ⁸184 hp @ 6400 rpm (SAE net). ⁹Always visually confirm that it is safe to drive before backing up; the rearview camera display does not provide complete information about all conditions and objects at the rear of your vehicle. ¹⁰The Bluetooth® word mark and logos are owned by the Bluetooth SIG, Inc., and any use of such marks by Honda Motor Co., Ltd., is under license. ¹¹Pandora, the Pandora logo, and the Pandora trade dress are trademarks or registered trademarks of Pandora Media, Inc. Used with permission. Compatible with select smartphones. See: www.pandora.com/ everywhere/mobile. Not all devices compatible with USB connection. Your wireless carrier's rate plans apply. ¹²The USB interface is used for playback of MP3, WMA or AAC music files from digital audio players and other USB devices, as well as smartphone data transfer on designated Smartphone/Audio Interface ports. Some USB devices and files may not work. Please see your Honda dealer for details. ¹³Check the HondaLink® website for smartphone compatibility. ¹⁴Apple CarPlay is a trademark of Apple Inc. ¹⁵Android and Android Auto are trademarks of Google Inc. ¹⁶SiriusXM services require a subscription after any trial period. If you decide to continue your SiriusXM service at the end of your trial subscription, the plan you choose will automatically renew and bill at then-current rates until you call SiriusXM at 1-866-635-2349 to cancel. See our Customer Agreement for complete terms at www.siriusxm.com. Fees and programming subject to change. XM satellite service is available only to those at least 18 years and older in the 48 contiguous United States and D.C. ©2017 SiriusXM Radio Inc. Sirius, XM and all related marks and logos are trademarks of SiriusXM Radio Inc. ¹⁷Compatible with select phones with Bluetooth.® Your wireless carrier's rate plans apply. State or local laws may limit use of texting feature. Only use texting feature when conditions allow you to do so safely. ¹⁸HomeLink® is a registered trademark of Gentex Corporation. ¹⁹The Honda Satellite-Linked Navigation System™ is available on EX-L trims and standard on Touring trims in the United States, Canada and Puerto Rico. (Honda HD Digital Traffic service only available in the United States, except Alaska.) Please see your Honda dealer for details. ²⁰HD Radio™ is a proprietary trademark of iBiquity Digital Corporation. ²¹NHL and the NHL Shield are registered trademarks of the National Hockey League. ©NHL 2017. All Rights Reserved. ²²3-Year/36,000-Mile Limited Warranty. 5-Year/60,000-Mile Limited Powertrain Warranty. Ordinary maintenance or adjustments, parts subject to normal wear and replacement, and certain items are excluded. Please see your Honda dealer for the terms and conditions of the limited warranties. Honda reminds you and your passengers to always use seat belts and appropriate child seats. Children 12 and under are safest when properly restrained in the rear seat. Specifications, features, illustrations and equipment shown in this brochure are based upon latest available information at the time of printing. Although descriptions are believed to be correct, accuracy cannot be guaranteed. American Honda Motor Co., Inc., reserves the right to make changes at any time, without notice or obligation, in colors, specifications, accessories, materials and models. Some features mentioned herein are not available in all areas. Please see your Honda dealer for details. Some vehicles may be shown with optional equipment. Available = Optional. All images contained herein are either owned by American Honda Motor Co., Inc., or used under a valid license. It is a violation of federal law to reproduce these images without express written permission from American Honda Motor Co., Inc., or the individual copyright owner of such images. Honda Financial Services is a DBA of American Honda Finance Corporation. Honda, the H mark symbol, Honda Care, HondaLink, Honda Satellite-Linked Navigation System, Honda Sensing, Collision Mitigation Braking System, CMBS, Eco Assist, ECON logo, HandsFreeLink, i-VTEC, Real Time AWD with Intelligent Control System and Walk Away Auto Lock are trademarks of Honda Motor Co., Ltd. ©2017 American Honda Motor Co., Inc.



LX

- 184-hp,⁸ 2.4-liter i-VTEC® 4-cylinder engine with direct injection
- Continuously variable transmission (CVT)
- Electric parking brake with automatic brake hold
- Eco Assist™ system
- Available Real Time AWD with Intelligent Control System™
- Hill start assist
- 17-inch alloy wheels
- Six airbags
- Multi-angle rearview camera⁹ with guidelines
- LED Daytime Running Lights (DRL)
- Fin-type roof-mounted antenna
- Remote entry system
- Power door and tailgate locks
- Roofline spoiler with integrated brake light
- Capless fuel filler
- Tilt and telescopic steering column
- Illuminated steering wheel-mounted controls
- Easy fold-down 60/40 split rear seatback
- Bluetooth®¹⁰ HandsFreeLink® and streaming audio
- Pandora¹¹ compatibility
- USB Audio Interface¹² (1.0-amp port in center console)



EX adds to or replaces LX features

- 190-hp,¹ 1.5-liter turbocharged and intercooled DOHC 4-cylinder engine with direct injection
- Remote engine start
- 18-inch alloy wheels
- Multi-angle rearview camera⁹ with dynamic guidelines
- Honda Sensing® suite of safety and driver-assistive features
- Auto-on/off headlights with auto high-beam
- Blind spot information system (BSI)³ with cross traffic monitor³
- Rear privacy glass
- Security system
- Smart Entry with Walk Away Auto Lock®
- Push button start
- One-touch power moonroof with tilt feature
- Fog lights
- Heated, body-colored power side mirrors including integrated turn indicators
- Dual-zone automatic climate control system
- Retractable cargo area cover
- Power windows with auto-up/down driver's and front passenger's windows
- Heated front seats
- Driver's seat with 12-way power adjustment, including 4-way power lumbar support
- 7-inch Display Audio with electrostatic touch-screen
- HondaLink®¹³
- Apple CarPlay™¹⁴ integration
- Android Auto™¹⁵ integration
- SiriusXM® Radio¹⁶
- SMS text message function¹⁷
- USB Smartphone/Audio Interface¹² (1.5-amp port in center console)
- 2nd-row 2.5 amp USB charging ports (2)



EX-L adds to or replaces EX features

- Power tailgate with programmable height
- Leather-wrapped steering wheel and shift knob
- Automatic-dimming rearview mirror
- HomeLink®¹⁸ remote system
- Driver's seat with two-position memory
- Leather-trimmed seats
- Passenger's seat with 4-way power adjustment
- Available Honda Satellite-Linked Navigation System™¹⁹ with voice recognition, Honda HD Digital Traffic and HD Radio™²⁰



TOURING adds to or replaces EX-L features

- Rain-sensing windshield wipers
- Hands-free access power tailgate
- Roof rails
- LED headlights (low and high beam)
- Dual chrome exhaust finishers
- 330-watt premium audio system with 9 speakers, including subwoofer
- Honda Satellite-Linked Navigation System¹⁹ with voice recognition, Honda HD Digital Traffic and HD Radio²⁰

Key Standard Features for All CR-V Models

- LED Daytime Running Lights (DRL)
- Capless fuel filler
- Easy fold-down 60/40 split rear seatback
- Bluetooth®¹⁰ HandsFreeLink® and streaming audio
- Hill start assist
- Multi-angle rearview camera⁹ with guidelines
- Electric parking brake with automatic brake hold



Whether you buy or lease a Honda vehicle, Honda Financial Services can assist you with the process. Please ask your dealer which lease or purchase plan best suits your needs.



Honda Care® is an affordable, comprehensive vehicle and travel protection plan backed by Honda reliability, service and parts. Please see your Honda dealer for details.



Manufactured to the same strict standards as Honda vehicles, Honda Genuine Accessories are the perfect way to personalize and protect your vehicle. Please see your Honda dealer for details.



Powerful. Agile. Versatile enough to handle almost any condition. It's no wonder Honda is the official vehicle of the NHL.²¹

All 2018 Honda vehicles – and any Honda Genuine Accessories installed at the time of vehicle purchase – are covered by a 3-year/36,000-mile limited warranty.²² Plus, Honda cars and trucks are covered by a 5-year/60,000-mile Limited Powertrain Warranty.²² For more information or assistance, see your Honda dealer or please give us a call at 1-800-33-Honda.

24-hour emergency road service is available to you in the United States, Puerto Rico and Canada throughout your 3-year/36,000-mile limited warranty term. Services include jump-starting, flat tire and lockout assistance, towing, and more (limitations apply). Call 1-866-864-5211.

For more information and complete specifications, visit crv.honda.com